

Challenging communities to innovate in education

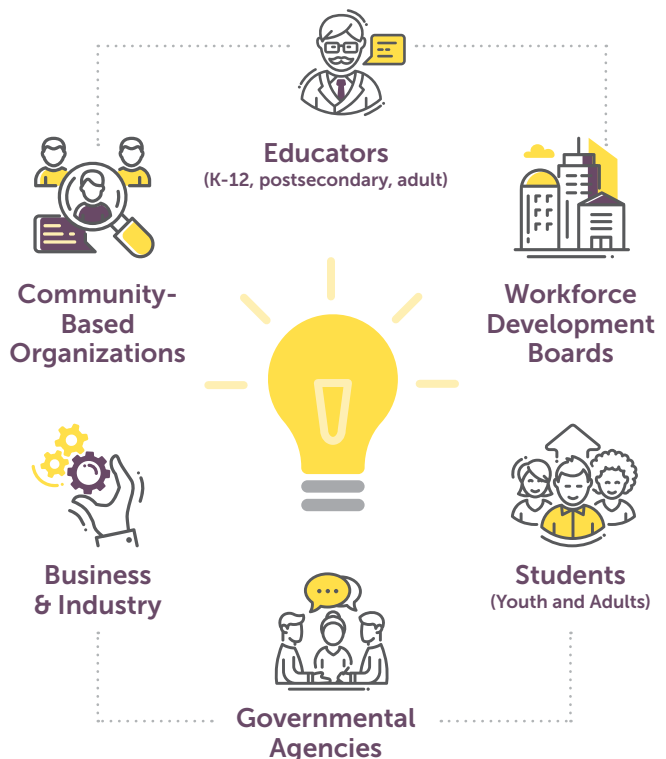


WHAT IS MINDS THAT MOVE US?

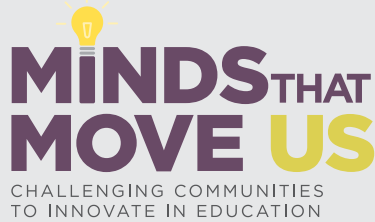
We believe that to collaborate is to innovate—and great innovation takes diverse minds to solve complex community issues. This is the founding philosophy behind the **Minds that Move Us** initiative, a challenge to communities to design innovative education and training models that create social equity and economic mobility for all. Driven by the market demands of business and industry as well as the needs of youth and adult learners, these challenges engage the bright minds of public/private partners to examine the current education and training gaps within their communities and then create models that can be scaled and replicated within various industries.

WHO PARTICIPATES IN THE CHALLENGES?

There are multiple stakeholders within a community that are passionate about solving workforce and education issues, and the **Minds that Move Us** initiative is a prime opportunity to engage a wide range of public/private partners to collaborate around any given challenge including, but not limited to:



To download an application or for more details go to:
MindsthatMoveUs.org



For more details go to:
MindsthatMoveUs.org

WHY SHOULD COMMUNITIES PARTICIPATE?

Too many youth and adults in the United States do not have the foundational skills necessary to further their education, pursue training opportunities, and improve their skill development. As a result, they are unable to obtain and/or further pursue meaningful and financially viable careers to sustain themselves and their families. If you know these challenges exist in your community, **Minds that Move Us** is your opportunity to develop lasting solutions to these pressing issues by bringing together a diverse team of public and private stakeholders to spark innovation in education. The end result—stronger individuals, families, communities, and businesses who are collectively working together to create social equity and economic mobility for all!

WHEN DO THE CHALLENGES TAKE PLACE?

The first **Minds that Move Us** challenge is to design career pathway innovations for adult learners who do not have any formal postsecondary training or education and lack the skills necessary to put themselves on a career path, especially those with disabilities. Open to communities across the United States, this challenge encourages creativity, collaboration and out-of-the-box ideas as solutions to pressing employment challenges and includes a design camp, festival, and coaching to assist in the development and implementation of promising practices. Applications for this challenge are due Friday, June 29, 2018. Attend our webinar on Friday, June 8th at 2pm EST to learn more. Future challenges will be announced at a later date.

HOW DO I LEARN MORE ABOUT THE CHALLENGES?

To download an application or for more details go to
MindsthatMoveUs.org

TAKE YOUR COMMUNITIES TO NEW HEIGHTS

Engage – Educate – Excel



POWERED BY:



FUNDED BY:

